

iELNN[®]

NINGBO HOPSON CHEMICAL INDUSTRY CO., LTD

Tel: 0086-574-8756 4800

Fax: 0086-574-8756 4717

E-mail: sales@chinahopson.com

Add: A2-1 OF #5 PLANT, NO.96 MUJIN ROAD,
NINGBO HIGH-TECH ZONE, NINGBO, 315000, CHINA

www.HopsonGlue.com

iELNN[®]PRO
BEAUTY LIFE

2022/2023
HopsonGlue.com

NAIL GLUE
EYELASH GLUE



01 NAIL GLUE INTRODUCTION

IELAN Nail Glue repairs broken nails, seals silk wraps and attaches artificial nails to natural fingernails.

Adheres to nails & nail tips in seconds

Quick setting and long lasting

Great for sealing silk wraps



HOW TO USE

1. Remove polish and clean nails thoroughly.
2. Apply one drop of glue to the split or broken nails or nail tip and hold the break or tip together with gentle pressure for 5~10 seconds.
3. Let dry and smooth nails with a file or buffer.
4. After each use , wipe applicator tip and replace cap tightly.



Nail Glue-Maximum Speed 2g

Model No : I-001

Size (g / oz) : 2g / 0.07 oz.

Product Detail : Fast set time with maximum strength and long lasting hold.



Precision Nail Glue 3g

Model No : I-002

Size (g / oz) : 3g / 0.10 oz.

Product Detail : Precision application, fast set time and long lasting hold.

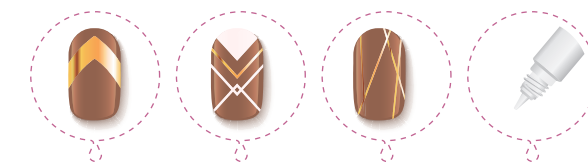


Nail Glue - Maximum Speed 3g

Model No : I-003

Size (g / oz) : 3g / 0.10 oz.

Product Detail : Fast set time and No-clog bottle and resealable cap is great for carry.

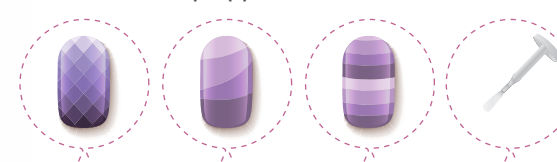


Nail Glue - Brush On 3g

Model No : I-004

Size (g / oz) : 3g / 0.10 oz.

Product Detail : Fast set time and best for brush tip application

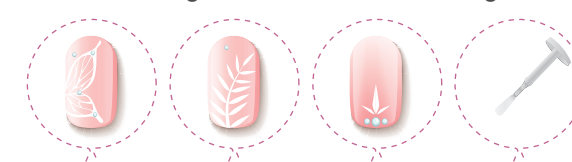


Nail Glue-Brush On 8g

Model No : I-005

Size (g / oz) : 8g / 0.28 oz.

Product Detail : Convenient brush on cap with fast setting time and maximum strength.





Nail Glue (Brush On 10g)

Model No : I-006

Size (g / oz) : 10g / 0.35 oz.

Product Detail : Convenient brush on cap with soft type bottle and maximum strength.



Acrylic Powder Clear

Model No : I-007

Size (g / oz) : 9g / 0.32 oz.

Product Detail : Poudre acrylique clear



Manicure Kits

Model No : I-008

Size (g / oz) : 15ml / 0.52 fl.oz.

Product Detail : For professional nail salon



02 EYELASH GLUE INTRODUCTION

IELAN Eyelash Glue is without hydroquinone. It's all approved by with the European and USA cosmetic standard.

With the high bonding performance, fast setting by 2-3 seconds and long lasting time for 5-7 weeks. It won't damage the natural eyelash.

Dries Quickly

Durable Holding Power

Non-irritation

Non-odor, non-toxic



HOW TO USE

Apply to eyelashes , wait 30 seconds until tacky , hold down from end to end for 10 seconds.

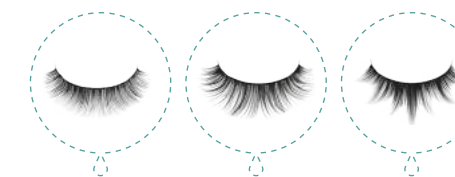


Eyelash Glue

Model No : E-001

Size (g / oz) : 3g / 0.10 oz.

Product Detail : Non-irritation, non-odor, non-toxic , long lasting





Eyelash Glue

Model No : E-002

Size (g / oz) : 5g / 0.176 oz.

Product Detail : Non-irritation,
non-odor,non-toxic ,long lasting



Eyelash Glue

Model No : E-003

Size (g / oz) : 3g / 0.10 oz.

Product Detail : Non-irritation,
non-odor,non-toxic ,long lasting



Eyelash Glue

Model No : E-004

Size (g / oz) : 5g / 0.18 oz.

Product Detail : Non-irritation,
non-odor,non-toxic ,long lasting

Color: White/Black



Eyelash Glue

Model No : E-005

Size (g / oz) : 5g / 0.18 oz.

Product Detail : Non-irritation,
non-odor,non-toxic ,long lasting

Color: White/Black



Eyelash Glue

Model No : E-006

Size (g / oz) : 7g / 0.25 oz.

Product Detail : Non-irritation,
non-odor,non-toxic ,long lasting

Color: White/Black



Eyelash Glue

Model No : E-007

Size (g / oz) : 7g / 0.25 oz.

Product Detail : Non-irritation,
non-odor,non-toxic ,long lasting

Color: White/Black



03 EYELASH GLUE INTRODUCTION

IELAN Eyelash Glue has introduced glues with different functions and suitable for different environments to meet the needs of different countries and different eyelash artists.

Dries Quickly

Durable Holding Power

Non-irritation

Non-odor, non-toxic



Eyelash Extension Glue

We believe that long-lasting eyelash extension doesn't happen overnight by simply using stronger glue. Instead, we provide many types of lash extension glues designed for different types of climates, skill levels, techniques, and client types.

Choose the best eyelash extension glue for each customer is most important considerations when applying extension eyelashes. We are proud of our best-selling glues which hold a long track record of delivering better retention and higher customer satisfaction.



Eyelash Glue Speed

Model No : No.1

Size (g / oz) : 5g / 10g

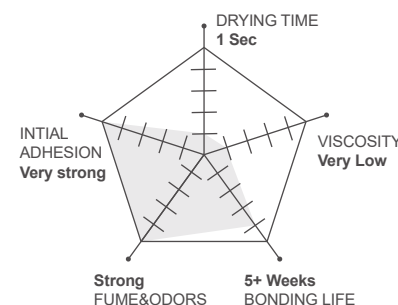
High performance:

Setting time of 1 sec.

Thin, liquid-like consistency

Setting time: 1-2"

Retention: ~ 4 Weeks



Eyelash Glue Quick

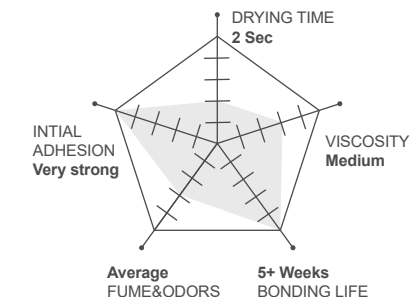
Model No : No.2

Size (g / oz) : 5g / 10g

High performance: Fastest setting time in medium consistency

Setting time: 2"

Retention: ~ 5 Weeks



Eyelash Glue Ultra

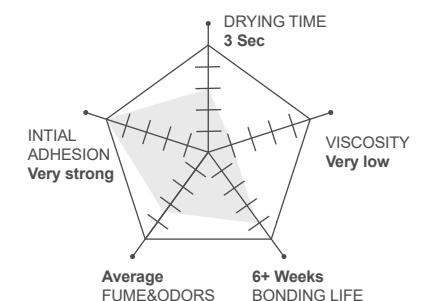
Model No : No.3

Size (g / oz) : 5g / 10g

High performance: Powerful bonding and long retention. Thin, liquid-like consistency

Setting time: 3-4"

Retention: ~ 6 Weeks



Eyelash Glue No Smell

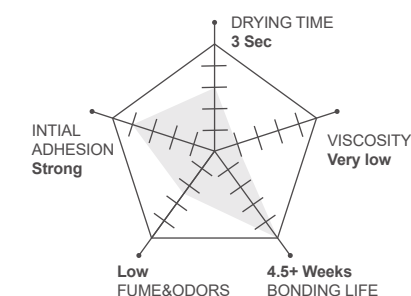
Model No : No.4

Size (g / oz) : 5g / 10g

High performance: Safe glue for clients with sensitivity to eyelash extension.

Setting time: 3-4"

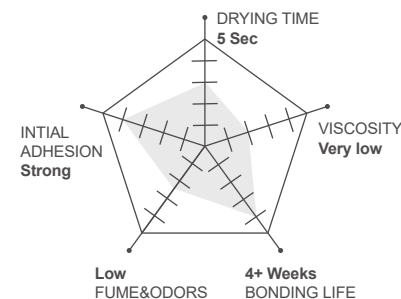
Retention: ~ 4.5 Weeks





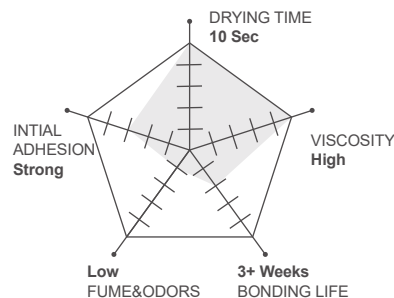
Eyelash Glue No Smell

Model No : No.5
 Size (g / oz) : 5g / 10g
High performance: Safe glue for clients with sensitivity to eyelash extension.
 Medium to low consistency.
Setting time: 5-6"
Retention: ~ 4 Weeks



Eyelash Glue Prevent Allergy

Model No : No.6
 Size (g / oz) : 5g / 10g
High performance: Safe glue for clients with sensitivity to eyelash extension.
 High viscosity.
Setting time: 8-10"
Retention: ~3 Weeks



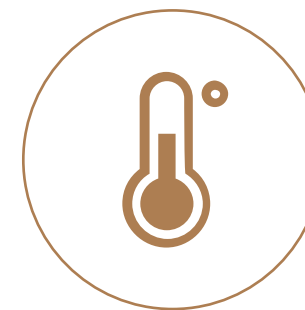
Gel Eyelash Glue Remover

Model No : No.8
 Size (g / oz) : 5g
Features: Safe and controllable way to remove unwanted lash extensions; Suitable for removing partial extensions before the fill-in

IMPORTANT FACTORS FOR GLUE APPLICATION

The temperature, humidity, light, cleanliness of grafting environment and the state of customers' eyelashes are all important factors affecting the effect of glue.

Suitable temperature
 22-26°C



- If the ambient temperature is too high**
- The glue is getting thin (like water)
 - The drying speed becomes faster
- If the ambient temperature is too low**
- The glue is getting thicken
 - The drying time is slower

Suitable humidity
 45-60%



- If the ambient humidity is too high**
- The glue will whitening appearance
 - The drying speed becomes faster
- If the ambient humidity is too lower**
- The drying time is slower

TIPS FOR YOU

- In order to better manage the glue, please indicate the purchase date, opening date and product name on the package after opening.
- After taking the glue, please dry the bottle mouth with a hard paper to keep no glue residue in the bottle mouth; then close the bottle cap tightly and store it.
- The glue needs to be stored in a cool, dark and dry environment. Before you opening the refrigerate the glue, please take out the glue 2 hours in advance, place it at room temperature, and then unpack it for use.
- Please put the glue together with the supplied desiccant into a ziplock bag and keep it sealed, and keep the glue upright.